

Guidelines for the Mobility of International Staff to Barcelona

Centre for Genomic Regulation

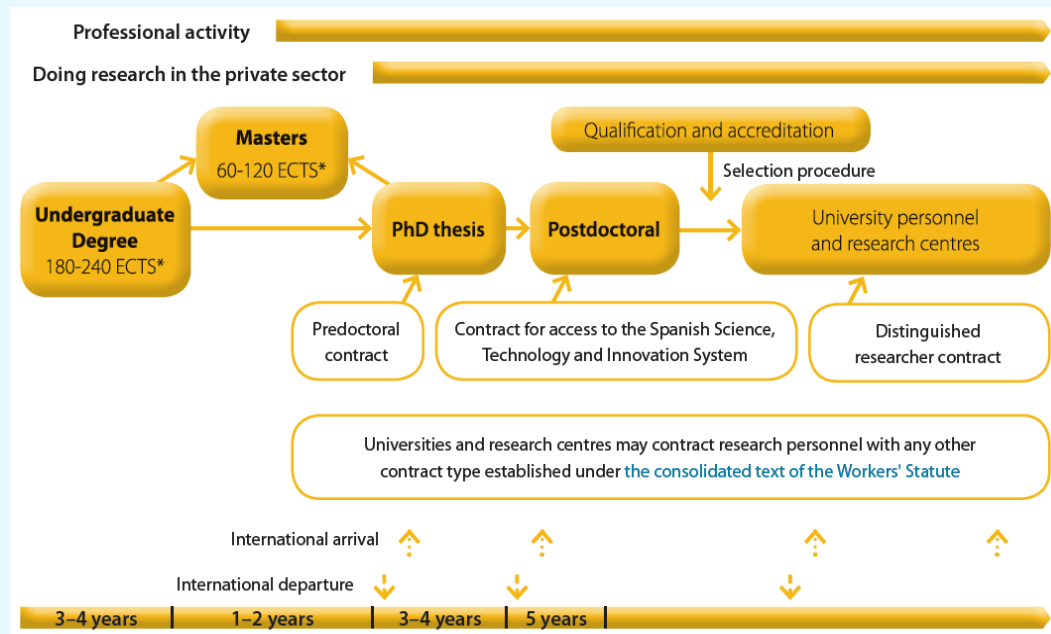
www.crg.eu



Researcher Career in Spain

The following chart shows the different stages of the research career.

Also you can find more information of the grants and fellowships opportunities that you can request at each stage. The document also contains links where you can expand information on each of the calls.



Source: Guidelines for the Management of the Mobility of the Foreign Researcher in Spain – 2017

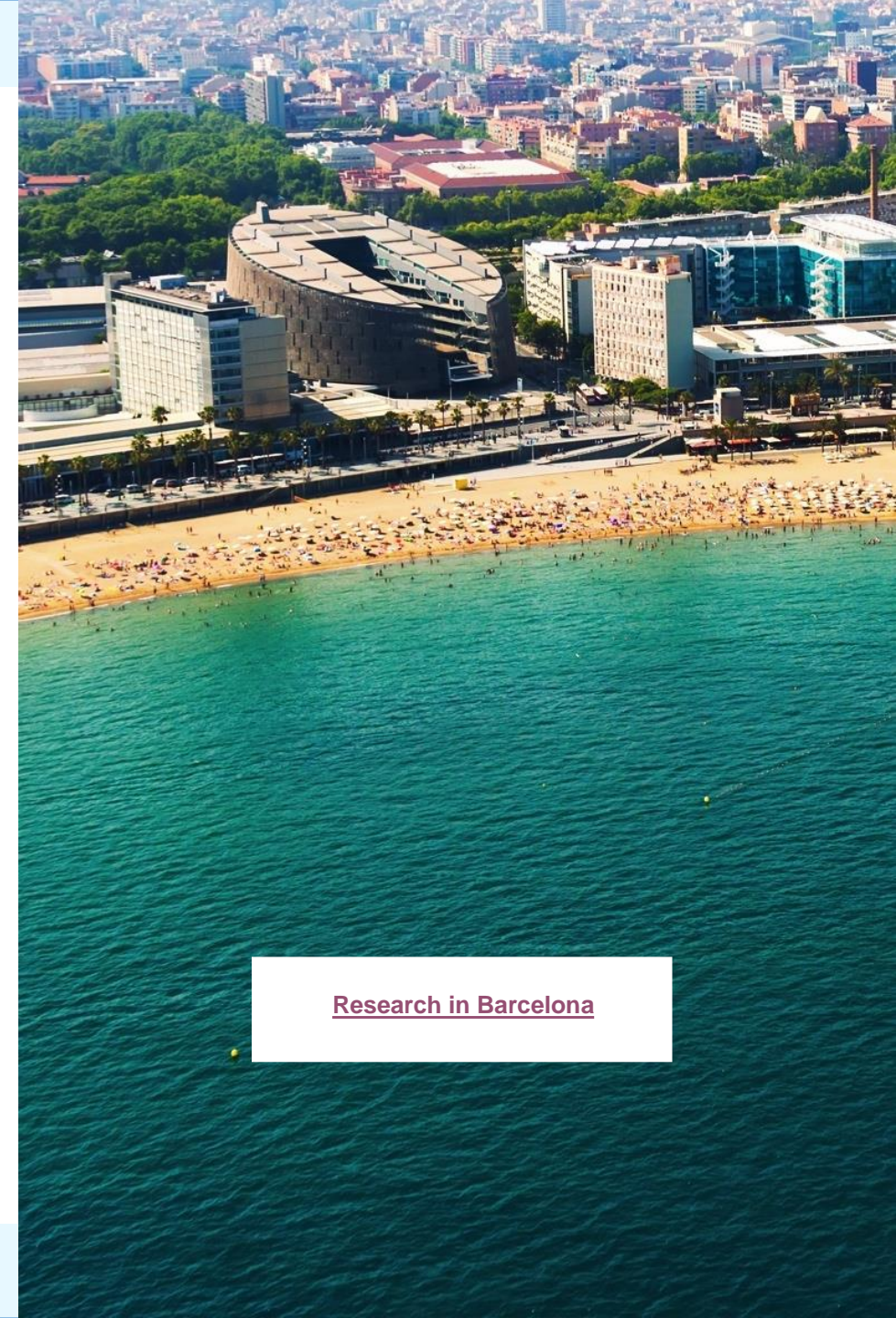
Research Career Path in Spain at a glance!

Research in Barcelona at a glance

With a population of 1.6 million in the city itself and a further 4 million in the suburbs, Barcelona is the second largest city in Spain, and probably the most cosmopolitan and most exciting. There are two official languages in Barcelona: Catalan and Spanish.

From a scientific point of view, Barcelona and its surroundings constitute the principal and most prominent biocluster in the Southern European Bioregion. The BioRegion of Catalonia is the cluster for biotechnology, biomedicine and medical technology in Catalonia. It is made up of 520 companies, 440 research groups and 54 research centres, 10 universities which offer life sciences studies, and 15 hospitals with noteworthy research activity. It also includes innovation and technology-transfer support structures and networks. The organisation Biocat boosts and promotes the cluster. The city also hosts a wide range of cutting-edge technological platforms and scientific core facilities, including ALBA, a new synchrotron light facility, and the Barcelona Supercomputing Center, home to the MareNostrum supercomputer.

The Centre for Genomic Regulation (CRG) is part of Barcelona Biomedical Research Park (PRBB), one of the scientific parks in the city, which is physically connected to the Hospital del Mar. The PRBB groups together different institutions, including the Experimental and Health Sciences Department of Pompeu Fabra University, the Hospital del Mar Medical Research Institute, the Centre of Regenerative Medicine in Barcelona, the Centre for Research in Environmental Epidemiology, the Institute of Evolutionary Biology, and the Pasqual Maragall Foundation for Research in Alzheimer, creating a critical mass of biomedical research.



[Research in Barcelona](#)

Centre for Genomic Regulation

The Centre for Genomic Regulation (CRG) is an international biomedical research institute of excellence, created in December 2000. It is a non-profit foundation funded by the Catalan Government through the Departments of Economy & Knowledge and Health, the Spanish Ministry of Economy, Industry and Competitiveness, the "la Caixa" Banking Foundation, and includes the participation of Pompeu Fabra University.

The mission of the CRG is to discover and advance knowledge for the benefit of society, public health and economic prosperity. The CRG believes that the medicine of the future depends on the groundbreaking science of today.

This requires an interdisciplinary scientific team focused on understanding the complexity of life from the genome to the cell to a whole organism and its interaction with the environment, offering an integrated view of genetic diseases.

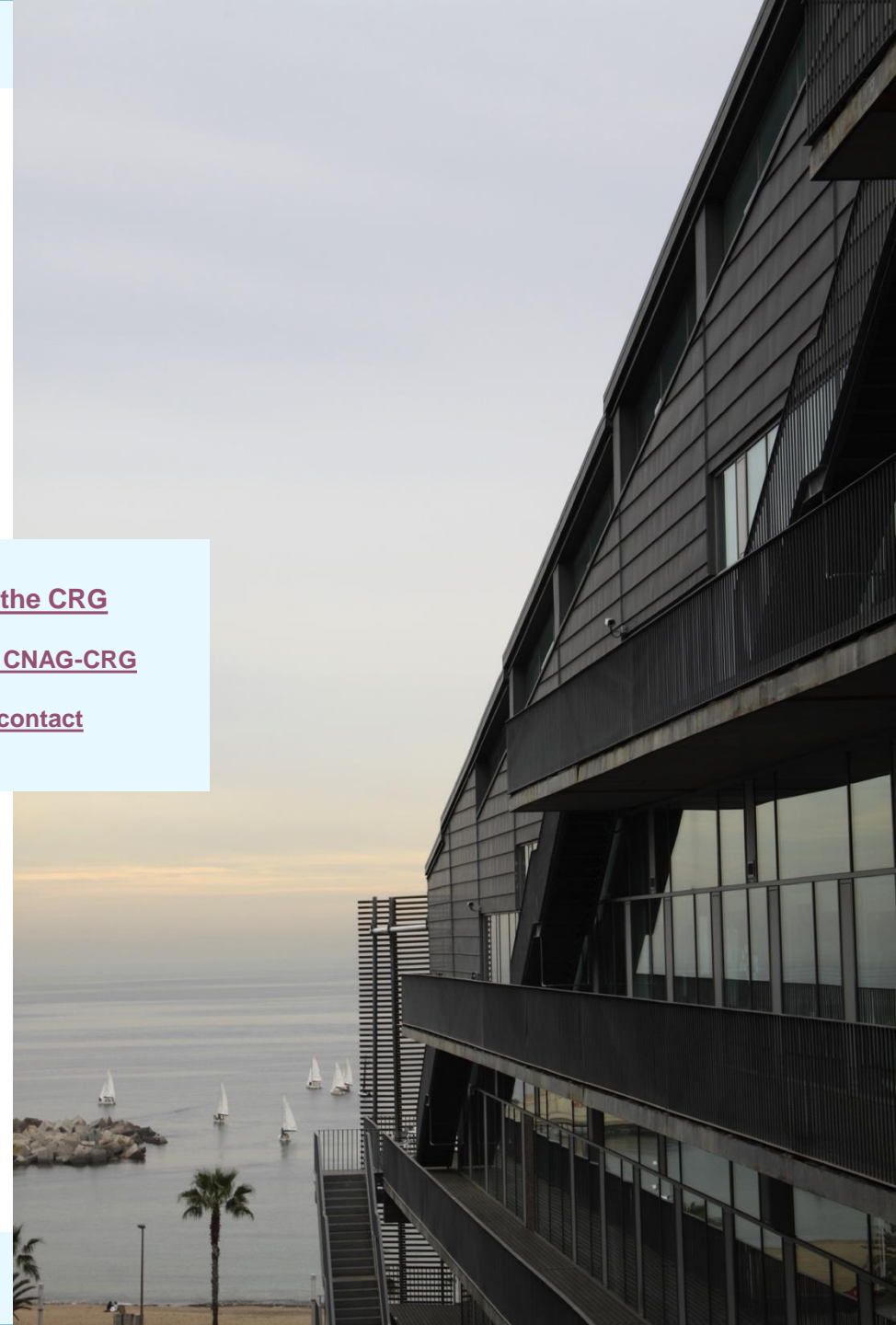
The CNAG-CRG is a non-profit organization funded by the Spanish Ministry of Economy, Industry and Competitiveness and the Catalan Government through the Economy and Knowledge Department and the Health Department. Competitive grants and contractual research with the private sector provide additional funds. From the 1st July 2015, the CNAG is integrated into the CRG.

The CNAG-CRG was created on 2009 with the mission to carry out projects in DNA sequencing and analysis in collaboration with researchers from Catalonia, Spain and from the international research community in order to ensure the competitiveness of our country in the strategic area of genomics.

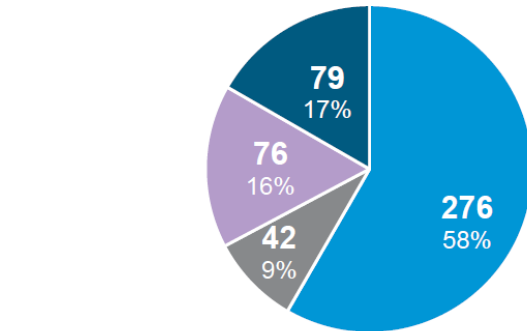
[About the CRG](#)

[About the CNAG-CRG](#)

[CRG contact](#)



Figures - 2018: Staff



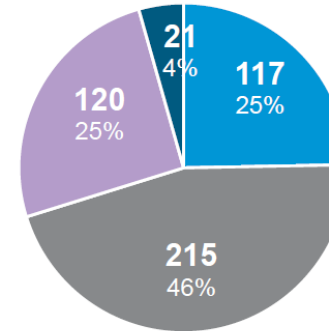
473 Employees

- Research Programmes
- Core Facilities
- Administration & Scientific Support
- CNAG-CRG Staff

29 Research Groups
excluding EGA

9 Core Facilities
Excluding SIT, FACS, Histology

2 Technological Platforms
CNAG & EGA



Ages

- <30 years old
- 30-40 years old
- 40-50 years old
- >50 years old



Internationality

38

represented nationalities

59%

Total Group Leaders+Head of Unit

67%

Total PostDoctoral Researchers

52%

Total PhD Students

59%

Total Int'l Research Staff

Top 5 Internationals:

1. Spain
2. Italy
3. Germany
4. France
5. United Kingdom

CRG HR Welcome Services

The following services are offered to newcomers:

- Support on topics such as legal and administrative queries (e.g. visa formalities, administrative requirements, practical information on living and working in Barcelona)
- CRG Welcome package and Welcome Meeting Sessions for newcomers including a tour to Administration offices and Core Facilities
- Catalan, English and Spanish language courses
- Information about Childcare & Schools
- Spouse Support (Dual Career Network and Programme in collaboration with [Barcelona Global](#))

You can contact CRG's HR & Welcome Services by phone, e-mail or in person.



+34 93 316 02 70



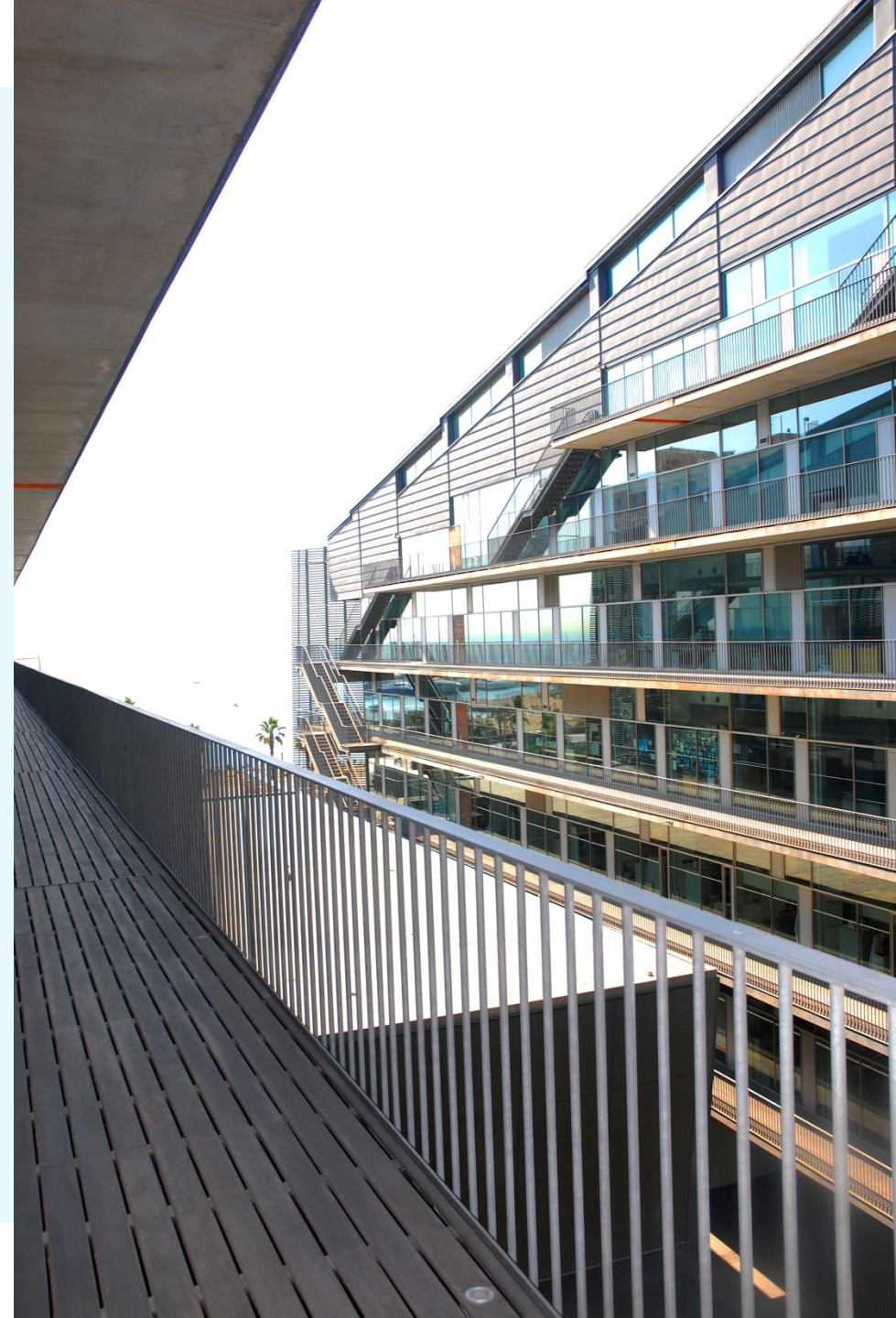
Email: hr@crg.eu



[CRG](#)



**HR Department
PRBB Building
Office: 500.04 (5th floor)**





Living in Barcelona

Barcelona is a very dynamic and multinational city that offers a wide range of social activities and opportunities.

To find yourself in the capital of Catalonia we advise you to look through the following welcome guides:

[Welcome to Barcelona Guide](#)

[Guidelines for the management of the mobility of the foreign researcher in Spain 2017](#)

The City Council of Barcelona as well offers its residents advice and guidance with the most common procedures when registering in the city.

[Barcelona International Welcome](#)

[Ajuntament de Barcelona: New residents](#)

[Spouse Support in collaboration with Barcelona Global](#)

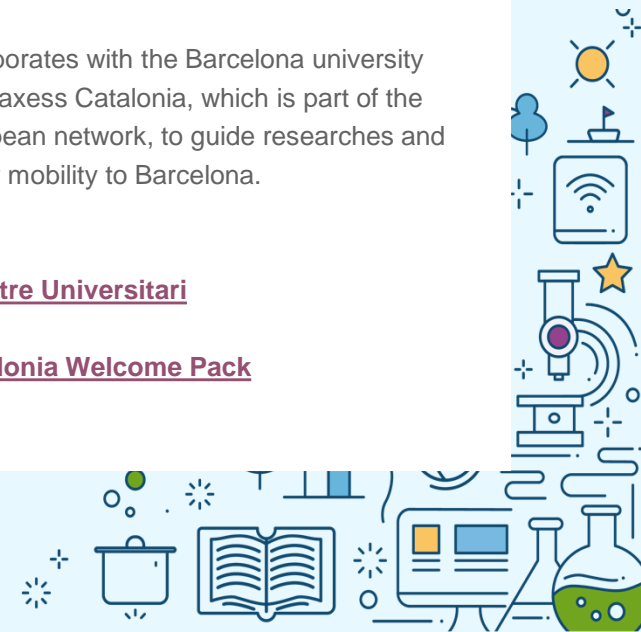
[Public nursery schools \(Escola Municipal Bressol\)](#)

[International Schools](#)

CRG also collaborates with the Barcelona university service and Euraxess Catalonia, which is part of the Euraxess European network, to guide researches and students in their mobility to Barcelona.

[Barcelona Centre Universitari](#)

[Euraxess Catalonia Welcome Pack](#)



Checklist of Procedures Before Entering Spain

- ✓ Check whether you need a stay permit, visa, or work or residency permit to travel or carry out research in Spain.
- ✓ If a visa is required, CRG will provide an invitation or a document accrediting the purpose of the visit.
- ✓ In exceptional cases, prepare the medical certificates required to enter Spain.
- ✓ Prepare accommodation. CRG will provide advice and guidance to be able to help you find accommodation.
- ✓ Are you going to drive? Is your driving license valid in Spain?
- ✓ Have you insured your belongings?
- ✓ If you come from a Member State of the EEA, apply for the European Health Insurance Card.
- ✓ If you are going to travel with your family (including children): apply for the corresponding permits and visas.

Source: Guidelines for the Management of the Mobility of the Foreign Researcher in Spain – 2017

[Procedures for EU Nationals](#)

[Procedures for non-EU nationals](#)



Planning Accommodation

CRG does not have on-site halls of residence or dormitories and Barcelona has a range of prices and housing options available throughout the city. Though there are many ways to find an apartment on your own, often it is more efficient to work with an agency. We provide some suggestions of links that can be useful for apartment search and housing and students residences.

[FAQs about housing](#)

Residences for Students and Researchers

- [RESA Housing](#) Contact: noemi.cervilla@resahousing.com
- [Residencia Campus del Mar](#) "Tarifa UPF-CRG"
- [Residence for Researchers](#)
- [Housing \(Barcelona International Welcome site\)](#)
- [Llugo Student Apartments Barcelona](#)

Listing Websites

- [Uniplaces](#) (recommended for temporary accommodation)
- [Idealista](#)
- [Fotocasa](#)
- [Pisos.com](#)
- [Habitacalia](#)

Real Estate and Housing Agencies

- [Gaudi House](#)
- [Ficasso](#)
- [Sh Barcelona](#)
- [Habitatge Jove](#)
- [Tu Apartamento](#)
- [Altiro Barcelona](#)

Calculate accommodation and living expenses

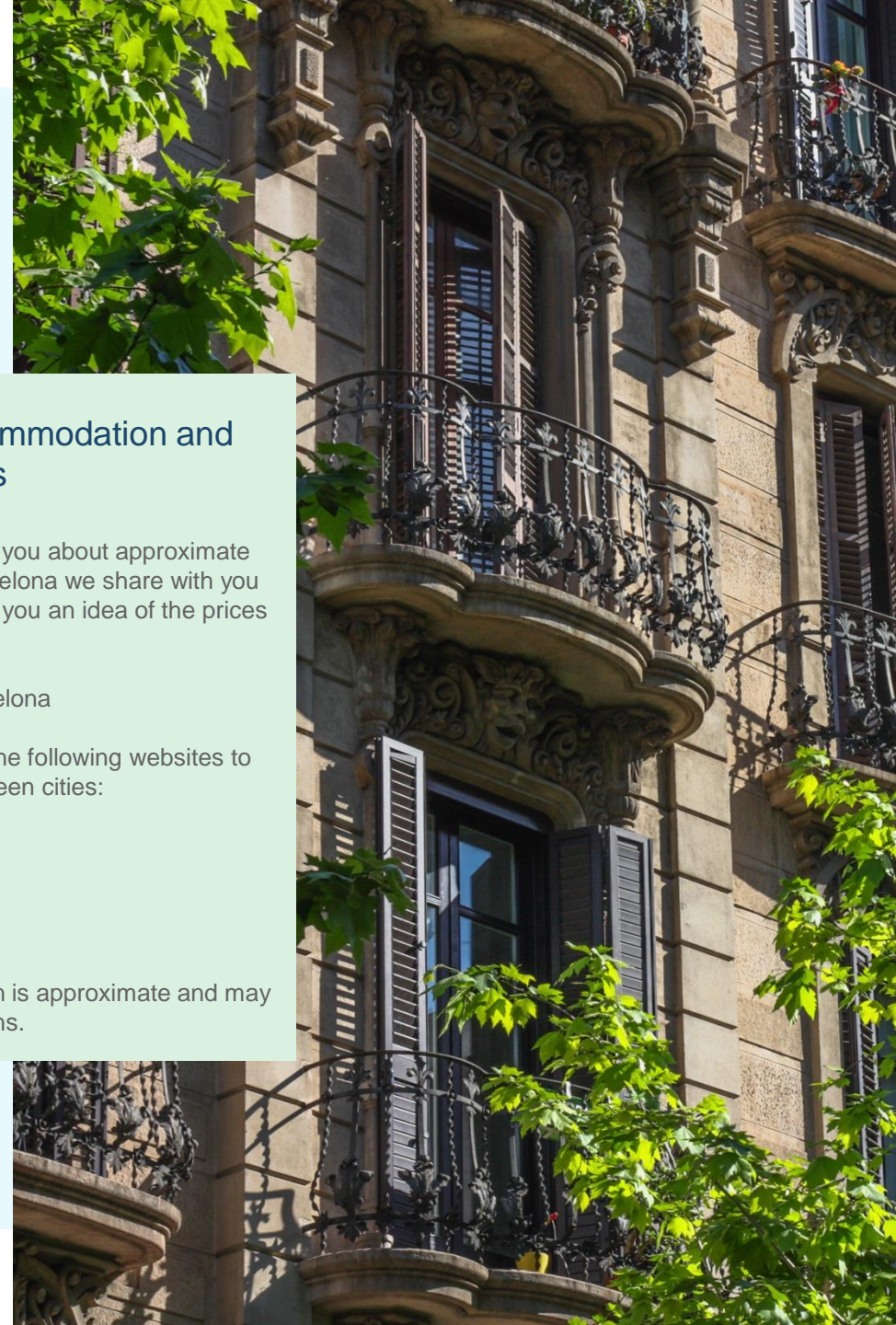
To advice and guide, you about approximate costs of living in Barcelona we share with you links that should give you an idea of the prices you will encounter.

Cost of living in Barcelona

You can also check the following websites to compare prices between cities:

[Numbeo](#)
[Expatistan](#)

*Note: the information is approximate and may be subject to variations.



Once in Spain

- ✓ Get city hall registration "[Empadronamiento](#)"
- ✓ For EU nationals, apply for [NIE](#) (foreign identity number)
- ✓ For non-EU nationals, if you are going to stay for longer than six months, get the [foreigner's identity card](#) or NIE card
- ✓ [Open a bank account](#)
- ✓ Apply for your [Social Security number](#)
- ✓ Learn about the [Spanish Health System](#) and apply for your [healthcard](#)
- ✓ If applicable apply for the [European Health Insurance Card](#) if you are going to travel to other countries in the European Economic Area or Switzerland
- ✓ Subscribe to a [communications service provider](#) (landline, mobile telephone, or the Internet).
- ✓ Learn about the different taxes in Spain, especially the rental and property tax, road and Technical Inspection of the Vehicle tax, and personal income tax. [Tax Payer Guide](#)
- ✓ Where applicable, depending on the circumstances, apply to register on the Censo Electoral de Residentes Extranjeros en España (electoral roll for foreign residents in Spain or "CERE") to be able vote in local elections.
- ✓ If you have travelled with your family (especially children):
 - Learn about the [Spanish Education System](#)
 - Enroll children in the relevant stage of their compulsory education in an officially recognised school.
- ✓ Learn about [Public Transport](#) in Barcelona
- ✓ [Car registration](#) in Spain
- ✓ Get informed on [Safety tips](#) and [useful telephone numbers](#)
- ✓ [Learn about the Municipal Apps](#)

Source: Guidelines for the Management of the Mobility of the Foreign Researcher in Spain – 2017



Networks and Events for the International Community

[Euraxess Catalonia](#)

Support network for mobility and professional development of researchers with more than 50 contact points of the university and research system in Catalonia. Initiative framed in the European mobility strategy of researchers of the European Research Area. EURAXESS services are available free of charge

[Emparejados](#)

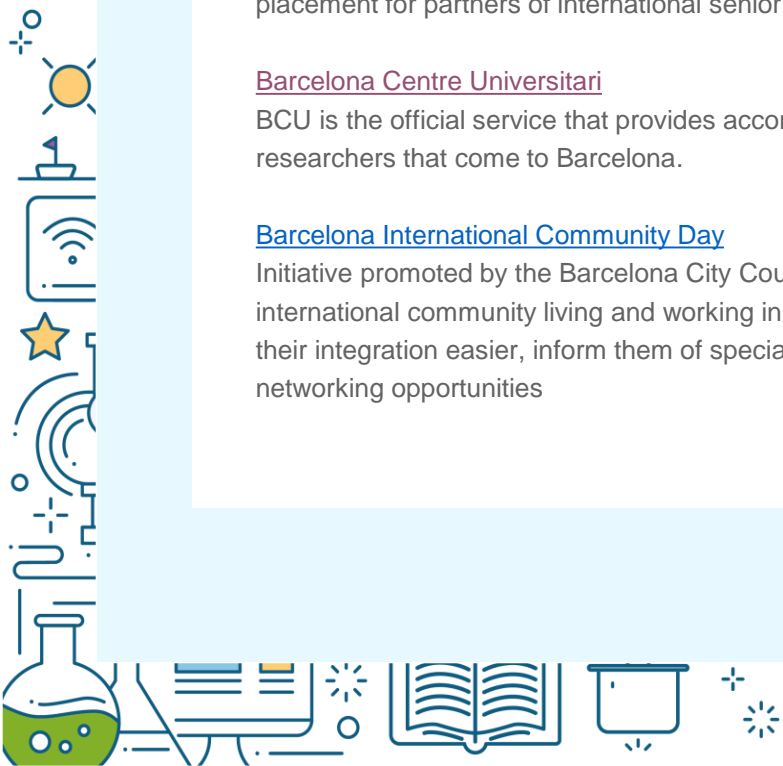
As the CRG is aware of the employment expectations of dual-career families, it therefore has a collaboration with Barcelona Global who offers a program; Emparejados that supports the work placement for partners of international senior investigators who are settled in Barcelona

[Barcelona Centre Universitari](#)

BCU is the official service that provides accommodation and helps out students, professors and researchers that come to Barcelona.

[Barcelona International Community Day](#)

Initiative promoted by the Barcelona City Council, through Barcelona Activa, aimed at the international community living and working in Barcelona to welcome them to their new city, make their integration easier, inform them of specialized services and boost the business and networking opportunities



Contact us

If you have any questions or inquiries about legal formalities or moving to Barcelona, you can contact CRG's HR & Welcome Services by phone, e-mail or in person.



+34 93 316 02 70



Email: hr@crg.eu



[CRG](#)



HR Department
PRBB Building
Office: 500.04 (5th floor)

