

PRODUCT INFORMATION

Product name : MEF2A antibody

Product type : Primary antibodies

Description : Rabbit polyclonal to MEF2A

Immunogen : 3 synthetic peptides (human) conjugated to KLH

Reacts with : Hu, Ms

Tested applications : ELISA and WB

GENE INFORMATION

Gene Symbol : MEF2A

Gene Name : Myocyte enhancer factor 2A

Ensembl ID : ENSG00000068305

Entrez GeneID : 4205

GenBank Accession number : BC013437.2

Omim ID : 600660

Swiss-Prot : Q02078

Molecular weight of MEF2A : 54.811kDa (Isoform MEF2), 54.442kDa (Isoform MEFA), 53.596kDa (Isoform RSRFC4), 53.227kDa (Isoform RSRFC9) and 53.852kDa (Isoform 5).

Function : Transcriptional activator which binds specifically to the MEF2 element, 5'-YTA[AT]4TAR-3', found in numerous muscle-specific genes. Also involved in the activation of numerous growth factor- and stress-induced genes. Mediates cellular functions not only in skeletal and cardiac muscle development, but also in neuronal differentiation and survival. Plays diverse roles in the control of cell growth, survival and apoptosis via p38 MAPK signaling in muscle-specific and/or growth factor-related transcription. In cerebellar granule neurons, phosphorylated and sumoylated MEF2A represses transcription of NUR77 promoting synaptic differentiation

Expected subcellular localization : Nucleus.

Expected tissue specificity : Isoform MEF2 and isoform MEFA are expressed only in skeletal and cardiac muscle and in the brain while isoform RSRFC4 and isoform RSRFC9 are expressed in all tissues examined.

Involvement in disease : Defects in MEF2A might be a cause of autosomal dominant coronary artery disease 1 with myocardial infarction (ADCAD1) [MIM:608320].

APPLICATION NOTE

Recommended dilution :

- **ELISA:** Antibody specificity was verified by direct ELISA against the 3 immunogen peptides. A titer of 1/20000 has been determined. Appropriate specificity controls were run.
- **WB:** 1/5000.

Optimal dilutions/concentration should be determined by the end user.

Raised in : Rabbit

Clonality : Polyclonal

Isotype : IgG

Purity : Purified Antibody

Storage buffer : 0.5 X PBS, containing a final concentration of 50% Glycerol, 0.1% BSA and 0.01% Thimerosal.

Form : Liquid

Storage instruction : Store at -20°C or -80°C. Avoid repeated freeze / thaw cycles.

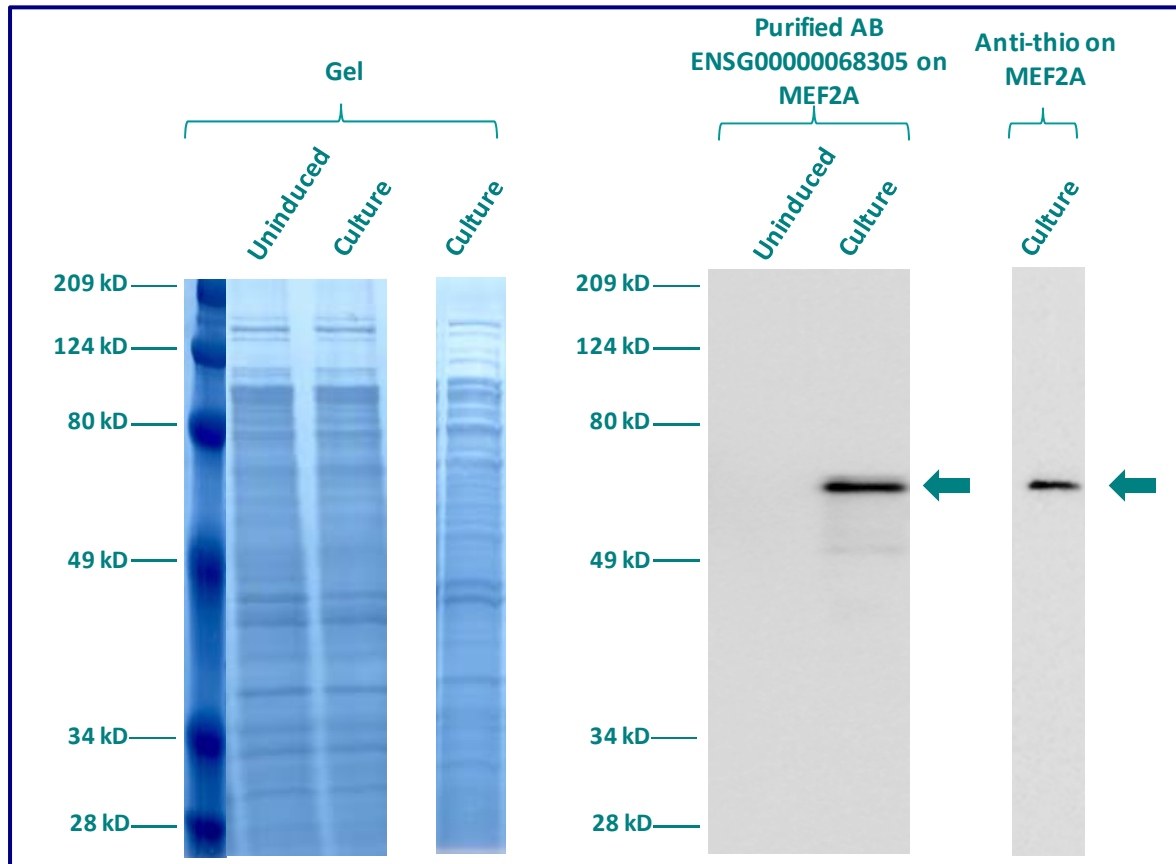
WESTERN BLOT ON RECOMBINANT PROTEIN

The purified antibody ENSG00000068305 has been tested at 1/5000 on uninduced (negative control) and induced culture of E.coli (one shot Top10 competent cells).

An anti-thio (positive control) has been tested at 1/5000 on uninduced (negative control) and induced culture of E.coli (one shot Top10 competent cells) as a positive control.

Plasmid name : pBAD-DEST49.

Molecular weight of MEF2A : 68.8kDa (54.8kDa + another 14kDa for the tag).



Gel concentration: 10%

Blocking: in 5% non-fat milk-PBST solution

1st Antibody: The antibodies are diluted in blocking buffer.

- Dilute the purified antibody ENSG00000068305 at 1:5000
- Dilute the anti-thio at 1:5000

60 minutes of incubation

2nd Antibody: The antibody is diluted in blocking buffer.

- Dilute the anti-Rabbit IgG HRP conjugated at 1/10000
- 60 minutes of incubation