

PRODUCT INFORMATION

Product name : KLF5 antibody

Product type : Primary antibodies

Description : Mouse monoclonal to KLF5

Immunogen : 1 synthetic peptide (human) conjugated to KLH

Reacts with : Hu, Ms

Tested applications : ELISA, WB & IF

GENE INFORMATION

Gene Symbol : KLF5

Gene Name : Kruppel-like factor 5 (intestinal)

Ensembl ID : ENSG00000102554

Entrez GeneID : 688

GenBank Accession number : D14520

Swiss-Prot : Q13887

Molecular weight : 50.8kDa

Function : Transcription factor that binds to GC box promoter elements. Activates the transcription of these genes.

Expected subcellular localization : Nucleus.

Expected tissue specificity : Expressed only in testis and placenta.

Summary : This gene encodes a member of the Kruppel-like factor subfamily of zinc finger proteins. Since the protein localizes to the nucleus and binds the epidermal growth factor response element, it is thought to be a transcription factor. [provided by RefSeq, Jul 2008]

APPLICATION NOTE

Recommended dilution :

- **ELISA:** Antibody specificity was verified by direct ELISA against the 1 immunogen peptide. A titer of 120000 has been determined. Appropriate specificity controls were run.
- **WB:** Dilution 1/1000
- **IF:** Dilution 1/100

Optimal dilutions/concentration should be determined by the end user.

Raised in : Mouse

Clonality : Monoclonal

Isotype : IgG

Purity : Purified Antibody

Concentration: 2mg/ml

Storage buffer : Containing a final concentration of PBS/glycerol (V/V), 0.1% BSA and 0.01% Thimerosal.

Form : Liquid

Storage instruction : Store at -20°C or -80°C. Avoid repeated freeze / thaw cycles.

WESTERN BLOT ON RECOMBINANT PROTEIN

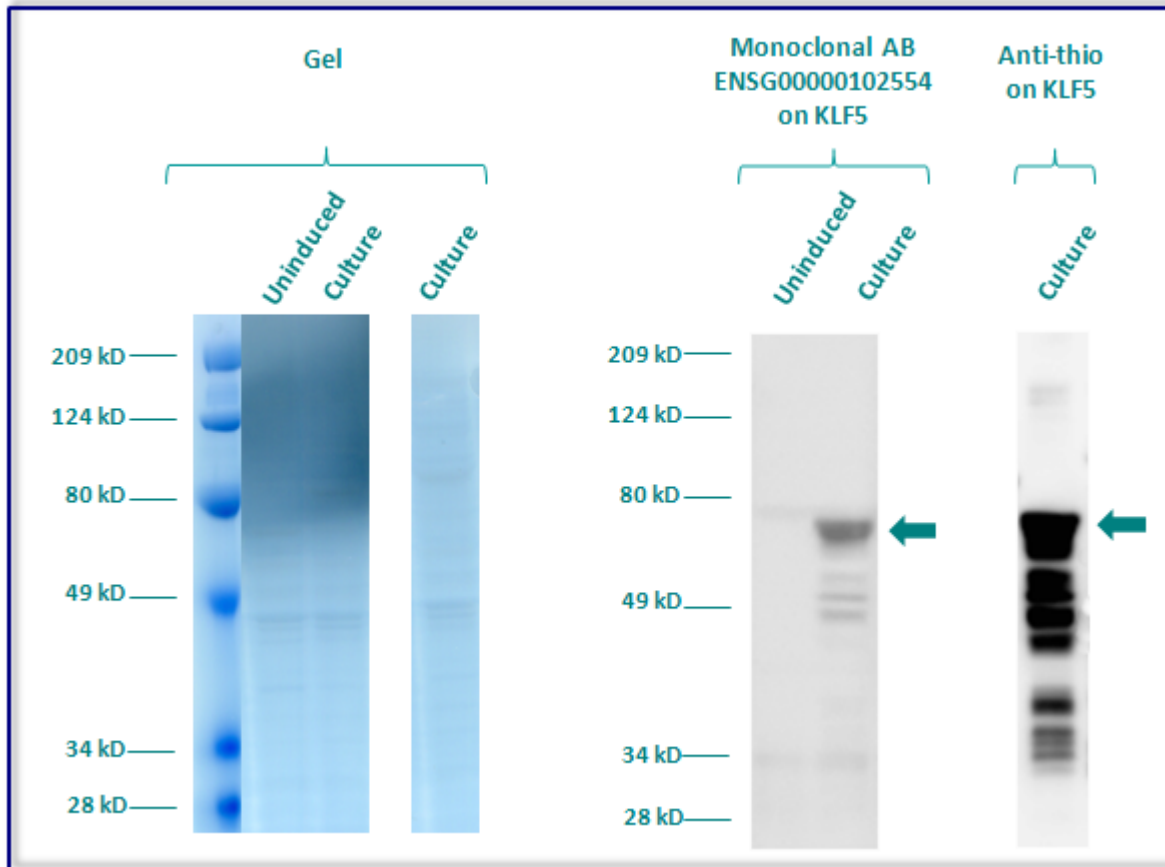
The monoclonal purified antibody ENSG00000102554 has tested at 1/1000 on uninduced (negative control) and induced culture of E.coli (one shot Top10 competent cells).

An anti-thio has been tested at 1/5000 on induced culture of E.coli (one shot Top10 competent cells) as a positive control.

Clone : 6E11F8G12, Isotype : G1

Plasmid name : pBAD-DEST49.

Molecular weight of KLF5 : 64.8kDa (50.8kDa + another 14kDa for the tag).



Gel concentration: 10%

Blocking: in 5% non-fat milk-PBST solution

1st Antibody: The antibodies are diluted in blocking buffer.

- Dilute the purified antibody ENSG00000102554 at 1:1000
- Dilute the anti-thio at 1:5000

60 minutes of incubation

2nd Antibody: The antibody is diluted in blocking buffer.

- Dilute the anti-Mouse IgG HRP conjugated at 1/10000

60 minutes of incubation

IMMUNOFLUORESCENCE ANALYSIS

Immunofluorescence analysis of Krueppel-like factor 5 (KLF5) expression in 4 cells lines (HELA, Capan-2, SH-SY5Y, Skin 3,44). The monoclonal antibody ENSG00000102554 has been tested at 1/100.

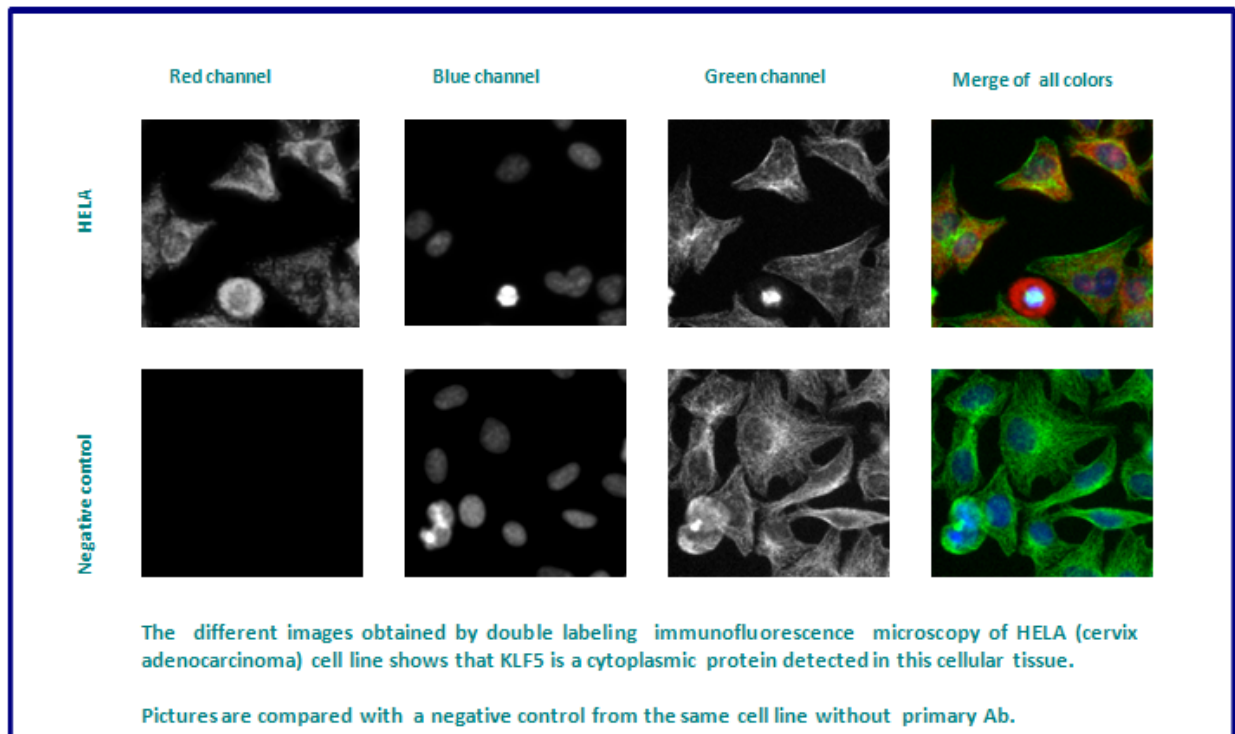
Green staining : cytoskeleton (microtubules/ α -tubuline)

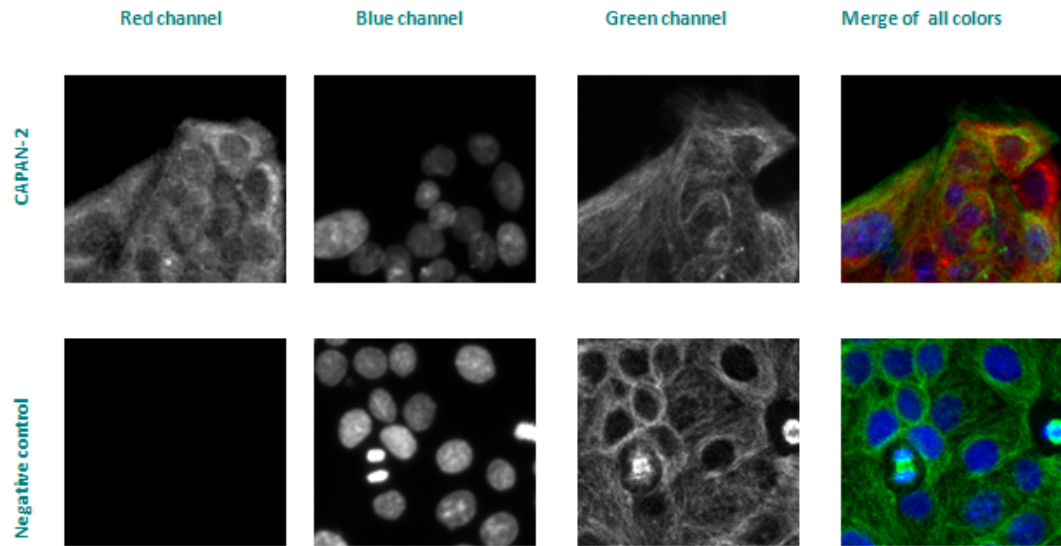
Blue staining : nucleus (Hoechst)

Red staining : anti- KLF5 antibody (purified)

Subcellular location : Nucleus

Tissue specificity : Expressed only in testis and placenta





The different images obtained by double labeling immunofluorescence microscopy of CAPAN-2 (Pancreas adenocarcinoma) cell line shows that KLF5 is a cytoplasmic protein detected in this cellular tissue.

Pictures are compared with a negative control from the same cell line without primary Ab.

Remaining cell lines tested gave a positive result with a cytoplasmic distribution.