

PRODUCT INFORMATION

Product name : KCMF1 antibody

Product type : Primary antibodies

Description : Mouse monoclonal to KCMF1

Immunogen : 1 synthetic peptide (human) conjugated to KLH

Reacts with : Hu, Ms

Tested applications : ELISA, WB & IF

GENE INFORMATION

Gene Symbol : KCMF1

Gene Name : potassium channel modulatory factor 1

Ensembl ID : ENSG00000176407

Entrez GeneID : 56888

GenBank Accession number : AF155652

Swiss-Prot : Q9P0J7

Molecular weight : 41.9kDa

Function : Has intrinsic E3 ubiquitin ligase activity and promotes ubiquitination.

Expected tissue specificity : Spleen, small intestine, ovary, peripheral blood, lung, kidney and pancreas. Expressed at low levels in the thymus, prostate, testis, colon, heart, brain, placenta and liver.

APPLICATION NOTE

Recommended dilution :

- **ELISA:** Antibody specificity was verified by direct ELISA against the 1 immunogen peptide. A titer of 28000 has been determined. Appropriate specificity controls were run.
- **WB:** Dilution 1/5000
- **IF:** Dilution 1/500

Optimal dilutions/concentration should be determined by the end user.

Raised in : Mouse

Clonality : Monoclonal

Isotype : IgG

Purity : Purified Antibody

Concentration: 2mg/ml

Storage buffer : Containing a final concentration of PBS/glycerol (V/V), 0.1% BSA and 0.01% Thimerosal.

Form : Liquid

Storage instruction : Store at -20°C or -80°C. Avoid repeated freeze / thaw cycles.

WESTERN BLOT ON RECOMBINANT PROTEIN

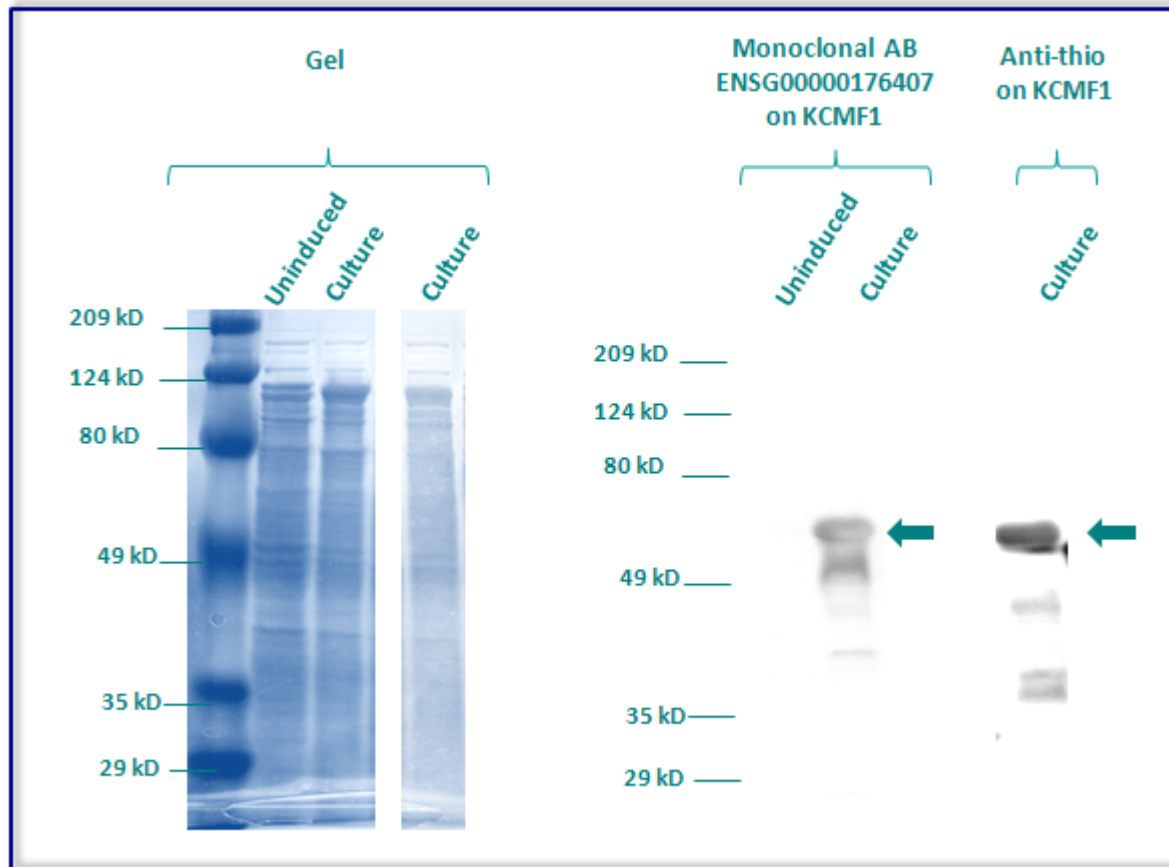
The monoclonal purified antibody ENSG00000176407 has tested at 1/5000 on uninduced (negative control) and induced culture of E.coli (one shot Top10 competent cells).

An anti-thio has been tested at 1/5000 on induced culture of E.coli (one shot Top10 competent cells) as a positive control.

Clone : 7G2C11G2, Isotype : G1; M; kappa

Plasmid name : pBAD-DEST49.

Molecular weight of KCMF1 : 56kDa (42kDa + another 14kDa for the tag).



Gel concentration: 10%

Blocking: in 5% non-fat milk-PBST solution

1st Antibody: The antibodies are diluted in blocking buffer.

- Dilute the purified antibody ENSG00000176407 at 1:5000
- Dilute the anti-thio at 1:5000

60 minutes of incubation

2nd Antibody: The antibody is diluted in blocking buffer.

- Dilute the anti-Mouse IgG HRP conjugated at 1/10000
- 60 minutes of incubation

IMMUNOFLUORESCENCE ANALYSIS

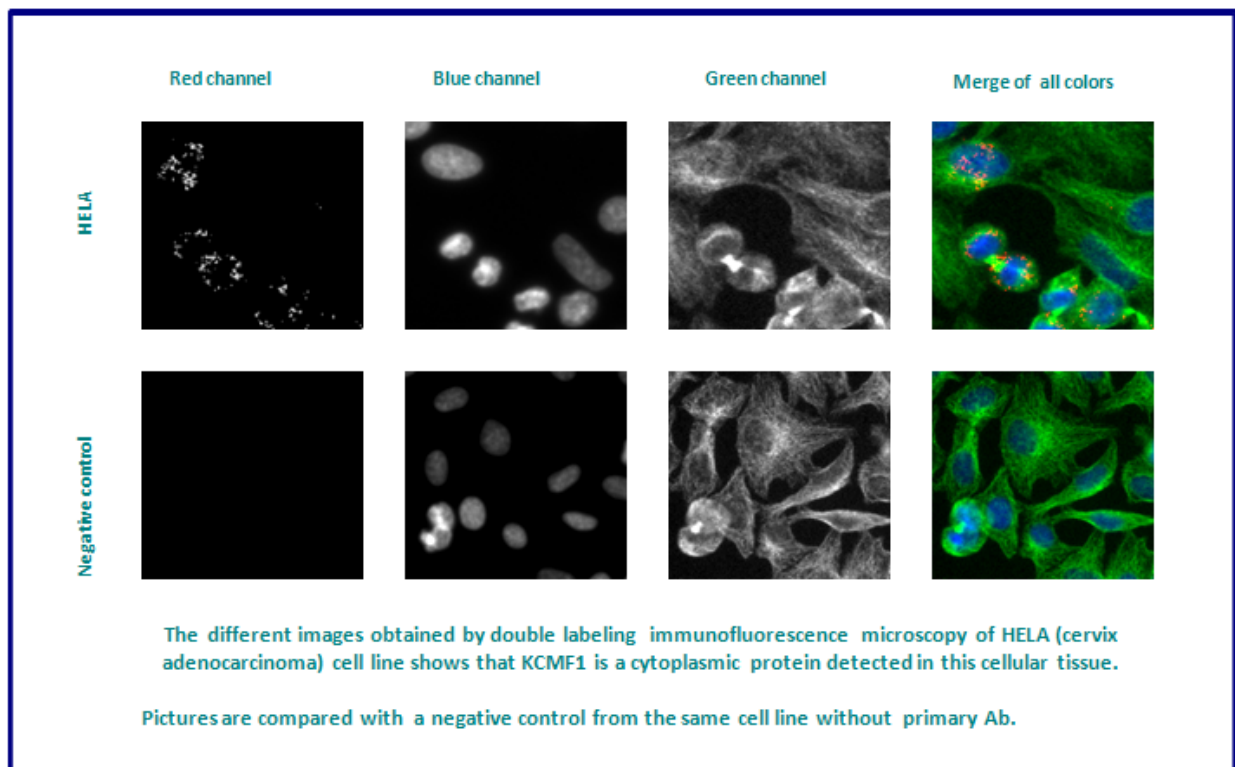
Immunofluorescence analysis of E3 ubiquitin-protein ligase KCMF1 (KCMF1) expression in 2 cells lines (HELA, Capan-2). The monoclonal antibody ENSG00000176407 has been tested at 1/500.

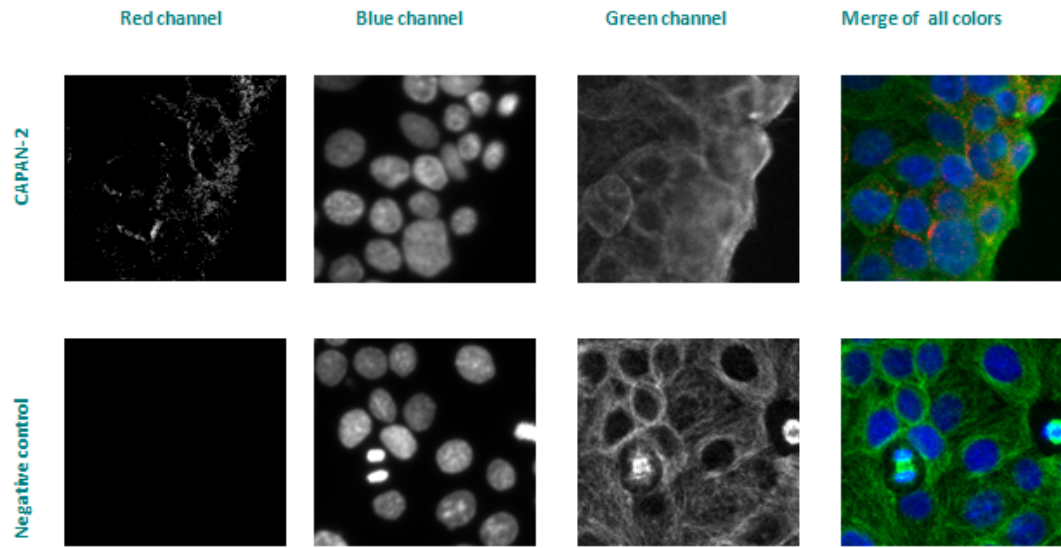
Green staining : cytoskeleton (microtubules/ α -tubuline)

Blue staining : nucleus (Hoechst)

Red staining : anti- KCMF1 antibody (purified)

Expected tissue specificity : Spleen, small intestine, ovary, peripheral blood, lung, kidney and pancreas. Expressed at low levels in the thymus, prostate, testis, colon, heart, brain, placenta and liver





The different images obtained by double labeling immunofluorescence microscopy of CAPAN-2 (Pancreas adenocarcinoma) cell line shows that KCMF1 is a cytoplasmic protein detected in this cellular tissue.

Pictures are compared with a negative control from the same cell line without primary Ab.