

## **PRODUCT INFORMATION**

---

**Product name :** ETS2 antibody

**Product type :** Primary antibodies

**Description :** Rabbit polyclonal to ETS2

**Immunogen :** 3 synthetic peptides (human) conjugated to KLH

**Reacts with :** Hu, Ms

**Tested applications :** ELISA, WB and IF

## **GENE INFORMATION**

---

**Gene Symbol :** ETS2

**Gene Name :** v-ets erythroblastosis virus E26 oncogene homolog 2 (avian)

**Ensembl ID :** ENSG00000157557

**Entrez Gene ID :** 2114

**Swiss-Prot :** P15036

**Molecular weight of ETS2 :** 53 kDa

**Expected subcellular localization :** Nucleus.

## **APPLICATION NOTE**

---

### **Recommended dilution :**

- **ELISA:** Antibody specificity was verified by direct ELISA against the 3 immunogen peptides. A minimum titer of 1/40000 has been determined. Appropriate specificity controls were run.
- **WB:** 1/5000.
- **IF:** 1/5000.

**Optimal dilutions/concentration should be determined by the end user.**

**Raised in :** Rabbit

**Clonality :** Polyclonal

**Isotype :** IgG

**Purity :** Purified Antibody

**Storage buffer :** 0.5 X PBS, containing a final concentration of 50% glycerol, 0.1% BSA and 0.01% Thimerosal.

**Form :** Liquid

**Storage instruction :** Store at -20°C or -80°C. Avoid repeated freeze / thaw cycles.

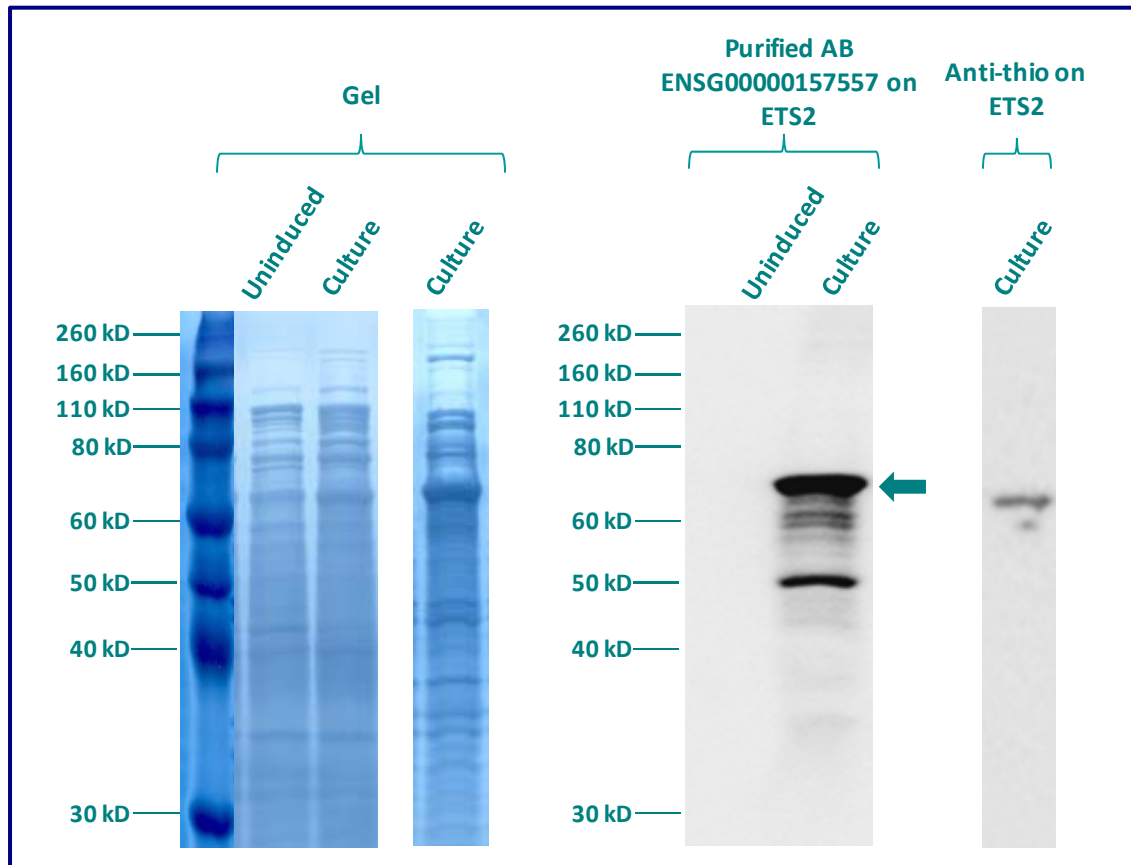
## WESTERN BLOT ON RECOMBINANT PROTEIN

The purified antibody ENSG00000157557 has been tested at 1/5000 on uninduced (negative control) and induced culture of E.coli (one shot Top10 competent cells).

An anti-thio (positive control) has been tested at 1/5000 on uninduced (negative control) and induced culture of E.coli (one shot Top10 competent cells) as a positive control.

Plasmid name : pBAD-DEST49.

Molecular weight of ETS2 : 67kDa (53kDa + another 14kDa for the tag).



Gel concentration: 10%

Blocking: in 5% non-fat milk-PBST solution

1<sup>st</sup> Antibody: The antibodies are diluted in blocking buffer.

- Dilute the purified antibody ENSG00000157557 at 1:5000
- Dilute the anti-thio at 1:5000

60 minutes of incubation

2<sup>nd</sup> Antibody: The antibody is diluted in blocking buffer.

- Dilute the anti-Rabbit IgG HRP conjugated at 1/10000
- 60 minutes of incubation

## IMMUNOFLUORESCENCE ANALYSIS

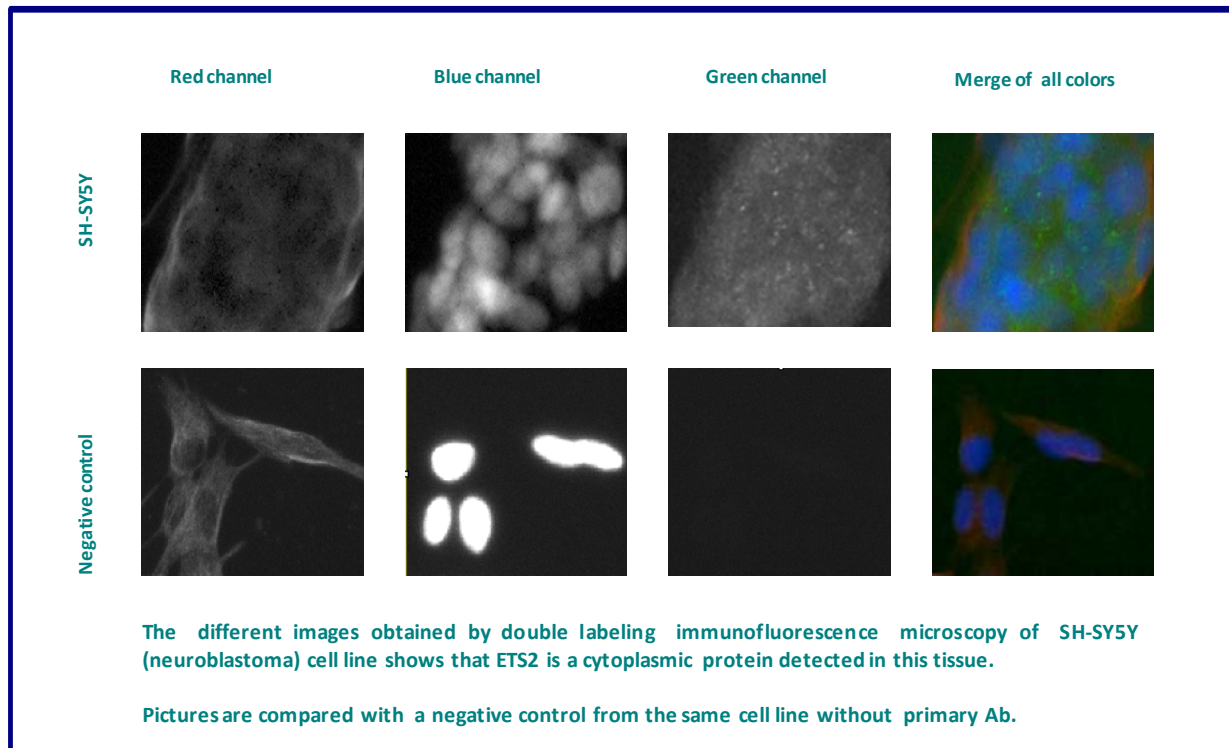
Immunofluorescence analysis of Protein C-ets-2 (ETS2) expression in 3 cells lines (Capan-2, SH-SY5Y, Skin 3,44). The purified antibody ENSG00000157557 has been tested at 1/5000.

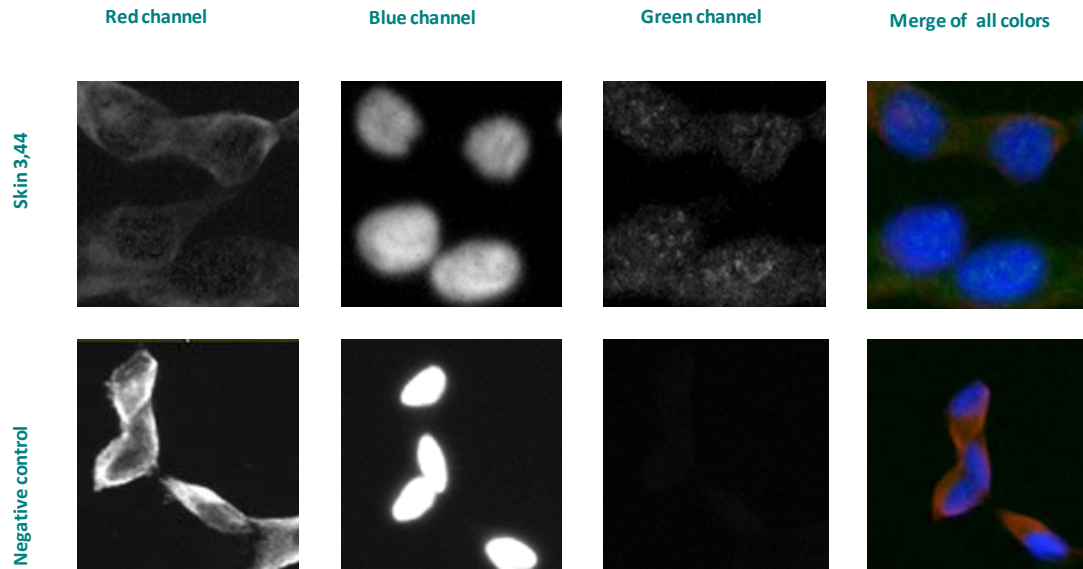
**Red staining** : cytoskeleton (microtubules/ $\alpha$ -tubuline)

**Blue staining** : nucleus (Hoechst)

**Green staining** : anti- ETS2 antibody (purified)

**Expected subcellular location** : Nucleus





The different images obtained by double labeling immunofluorescence microscopy of Skin 3,44 (melanoma) cell line shows that ETS2 is a nuclear and cytoplasmic protein detected in this tissue.

Pictures are compared with a negative control from the same cell line without primary Ab.

Remaining cell lines tested gave a positive result with a nuclear and cytoplasmic distribution.