

PRODUCT INFORMATION

Product name : BCL6 antibody

Product type : Primary antibodies

Description : Mouse monoclonal to BCL6

Immunogen : 1 synthetic peptide (human) conjugated to KLH

Reacts with : Hu, Ms

Tested applications : ELISA, WB & IF

GENE INFORMATION

Gene Symbol : BCL6

Gene Name : B-cell CLL/lymphoma 6

Ensembl ID : ENSG00000113916

Entrez GeneID : 604

GenBank Accession number : BC053899.1

Swiss-Prot : P41182

Molecular weight : 78.8 & 72.4kDa

Function : Transcriptional repressor which is required for germinal center formation and antibody affinity maturation. Probably plays an important role in lymphomagenesis.

Expected subcellular localization : Nucleus.

Expected tissue specificity : Expressed in germinal center T and B-cells and in primary immature dendritic cells.

Summary : The protein encoded by this gene is a zinc finger transcription factor and contains an N-terminal POZ domain. This protein acts as a sequence-specific repressor of transcription, and has been shown to modulate the transcription of START-dependent IL-4 responses of B cells. This protein can interact with a variety of POZ-containing proteins that function as transcription corepressors. This gene is found to be frequently translocated and hypermutated in diffuse large-cell lymphoma (DLCL), and may be involved in the pathogenesis of DLCL. Alternatively spliced transcript variants encoding different protein isoforms have been found for this gene. [provided by RefSeq, Sep 2008]

APPLICATION NOTE

Recommended dilution :

- **ELISA:** Antibody specificity was verified by direct ELISA against the 1 immunogen peptide. A titer of 260000 has been determined. Appropriate specificity controls were run.
- **WB:** Dilution 1/500
- **IF:** Dilution 1/100

Optimal dilutions/concentration should be determined by the end user.

Raised in : Mouse

Clonality : Monoclonal

Isotype : IgG

Purity : Purified Antibody

Concentration: 2mg/ml

Storage buffer : Containing a final concentration of PBS/glycerol (V/V), 0.1% BSA and 0.01% Thimerosal.

Form : Liquid

Storage instruction : Store at -20°C or -80°C. Avoid repeated freeze / thaw cycles.

WESTERN BLOT ON RECOMBINANT PROTEIN

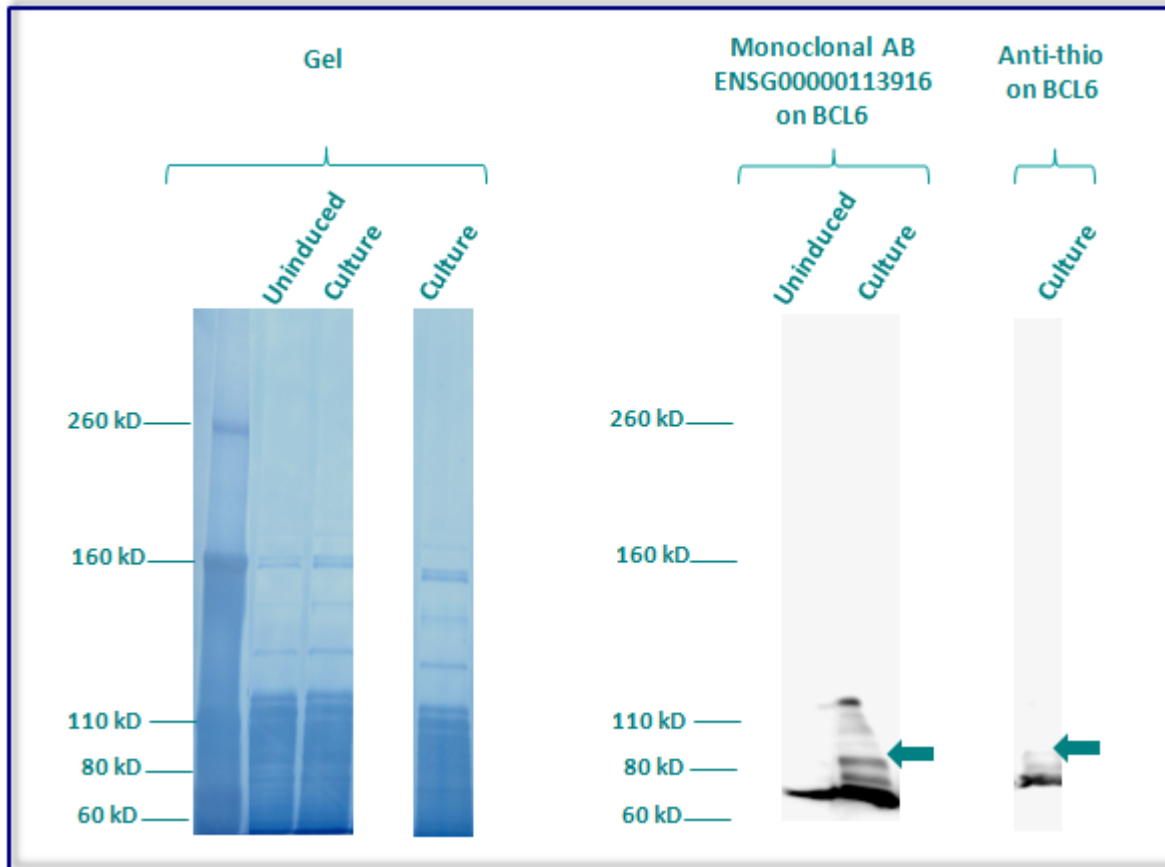
The monoclonal purified antibody ENSG00000113916 has tested at 1/500 on uninduced (negative control) and induced culture of E.coli (one shot Top10 competent cells).

An anti-thio has been tested at 1/5000 on induced culture of E.coli (one shot Top10 competent cells) as a positive control.

Clone : 4E.1H10H9, Isotype : G1; kappa

Plasmid name : pBAD-DEST49.

Molecular weight of BCL6 : 92.8kDa (78.8kDa + another 14kDa for the tag).



Gel concentration: 10%

Blocking: in 5% non-fat milk-PBST solution

1st Antibody: The antibodies are diluted in blocking buffer.

- Dilute the purified antibody ENSG00000113916 at 1:500
- Dilute the anti-thio at 1:5000

60 minutes of incubation

2nd Antibody: The antibody is diluted in blocking buffer.

- Dilute the anti-Mouse IgG HRP conjugated at 1/10000

60 minutes of incubation

IMMUNOFLUORESCENCE ANALYSIS

Immunofluorescence analysis of B-cell lymphoma 6 protein (BCL6) expression in 4 cells lines (HELA, 293T/17, Capan-2, SH-SY5Y). The monoclonal antibody ENSG00000113916 has been tested at 1/100.

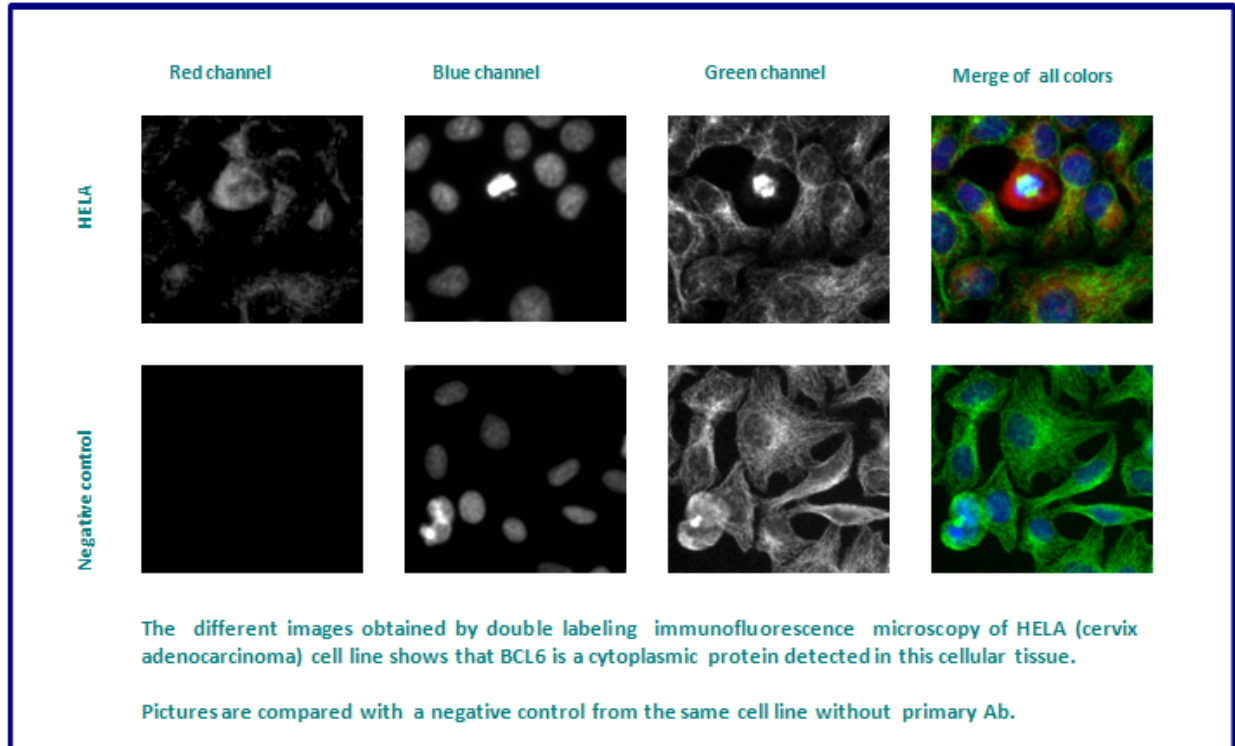
Green staining : cytoskeleton (microtubules/ α -tubuline)

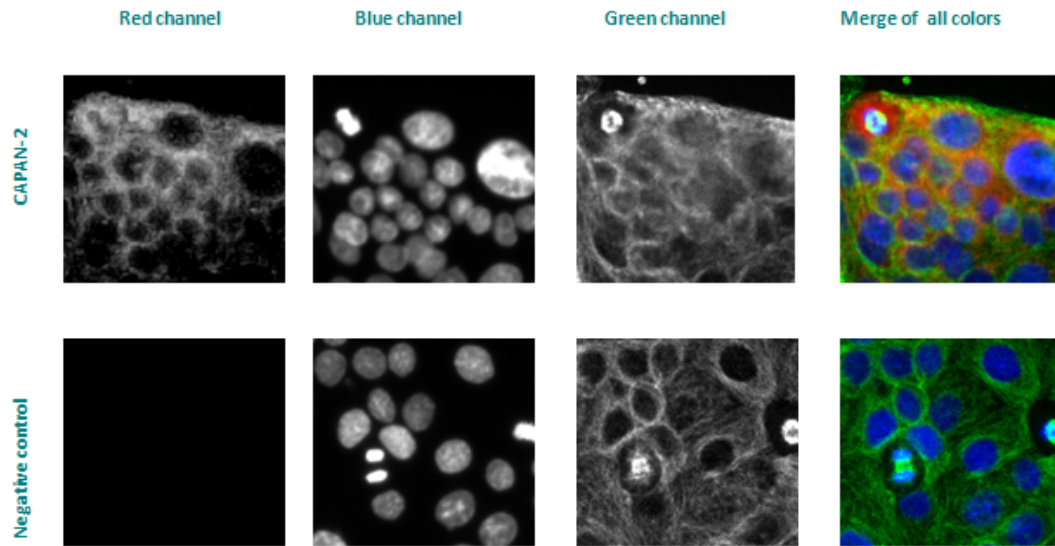
Blue staining : nucleus (Hoechst)

Red staining : anti- BCL6 antibody (purified)

Expected subcellular location : Nucleus

Expected tissue specificity : Expressed in germinal center T and B cells and in primary immature dendritic cells





The different images obtained by double labeling immunofluorescence microscopy of CAPAN-2 (Pancreas adenocarcinoma) cell line shows that BCL6 is a cytoplasmic protein detected in this cellular tissue.

Pictures are compared with a negative control from the same cell line without primary Ab.

Remaining cell lines tested gave a positive result with a cytoplasmic and nuclear distribution.