

PRODUCT INFORMATION

Product name : BCL11B antibody

Product type : Primary antibodies

Description : Rabbit polyclonal to BCL11B

Immunogen : 3 synthetic peptides (human) conjugated to KLH

Reacts with : Hu, Ms

Tested applications : ELISA, WB and IF

GENE INFORMATION

Gene Symbol : BCL11B

Gene Name : B-cell CLL/lymphoma 11B (zinc finger protein)

Ensembl ID : ENSG00000127152

Entrez Gene ID : 64919

GenBank Accession number : AJ404614

Swiss-Prot : Q9C0K0

Molecular weight of BCL11B : 95.9 & 88.5 kDa

Function : Tumor-suppressor protein involved in T-cell lymphomas. May function on the P53-signaling pathway. May be a key regulator of both differentiation and survival during thymocyte development. Repress transcription through direct, TFCOUP2-independent binding to a GC-rich response element.

Expected subcellular localization : Nucleus.

Expected tissue specificity : Highly expressed in brain and in malignant T-cell lines derived from patients with adult T-cell leukemia/lymphoma.

APPLICATION NOTE

Recommended dilution :

- **ELISA:** Antibody specificity was verified by direct ELISA against the 3 immunogen peptides. A minimum titer of 1/80000 has been determined. Appropriate specificity controls were run.
- **WB:** 1/5000.
- **IF:** 1/5000.

Optimal dilutions/concentration should be determined by the end user.

Raised in : Rabbit

Clonality : Polyclonal

Isotype : IgG

Purity : Purified Antibody

Storage buffer : Containing a final concentration of PBS/glycerol (V/V), 0.1% BSA and 0.01% Thimerosal.

Form : Liquid

Storage instruction : Store at -20°C or -80°C. Avoid repeated freeze / thaw cycles.

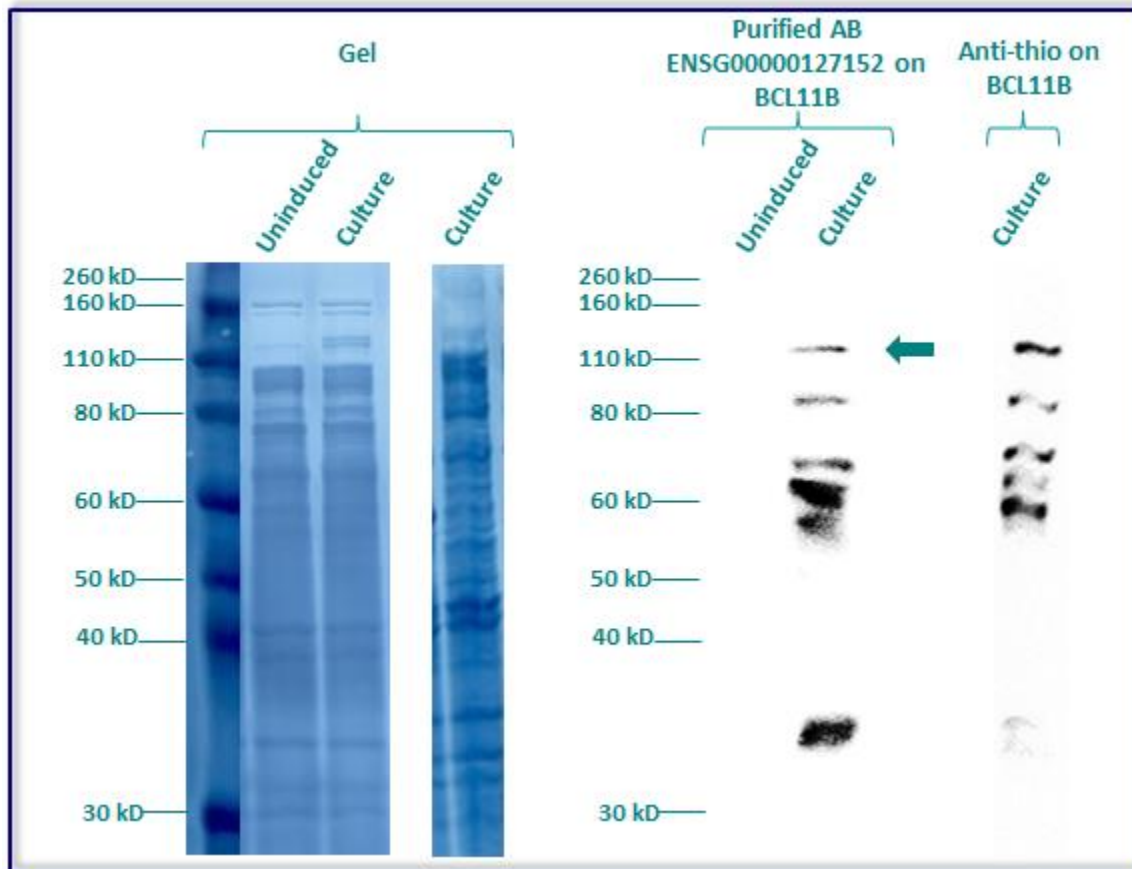
WESTERN BLOT ON RECOMBINANT PROTEIN

The purified antibody ENSG00000127152 has been tested at 1/5000 on uninduced (negative control) and induced culture of E.coli (one shot Top10 competent cells).

An anti-thio (positive control) has been tested at 1/5000 on uninduced (negative control) and induced culture of E.coli (one shot Top10 competent cells) as a positive control.

Plasmid name : pBAD-DEST49.

Molecular weight of BCL11B : 109.9kDa (95.9kDa + another 14kDa for the tag).



NOTE: THE PURIFIED POLYCLONAL ANTIBODY DOES NOT DETECT THE PROTEIN IN THE FOLLOWING CELL LYSATES (HeLa, SAOS 2, SH-SY5Y, SKIN 3.44 & 293T17) AT A DILUTION OF 1:250.

Gel concentration: 10%

Blocking: in 5% non-fat milk-PBST solution

1st Antibody: The antibodies are diluted in blocking buffer.

- Dilute the purified antibody ENSG00000127152 at 1:5000
 - Dilute the anti-thio at 1:5000
- 60 minutes of incubation

2nd Antibody: The antibody is diluted in blocking buffer.

- Dilute the anti-Rabbit IgG HRP conjugated at 1/10000
- 60 minutes of incubation

IMMUNOFLUORESCENCE ANALYSIS

Immunofluorescence analysis of B-cell lymphoma/leukemia 11B (BCL11B) expression in 2 cells lines (SH-SY5Y, Skin 3,44). The purified antibody ENSG00000127152 has been tested at 1/5000.

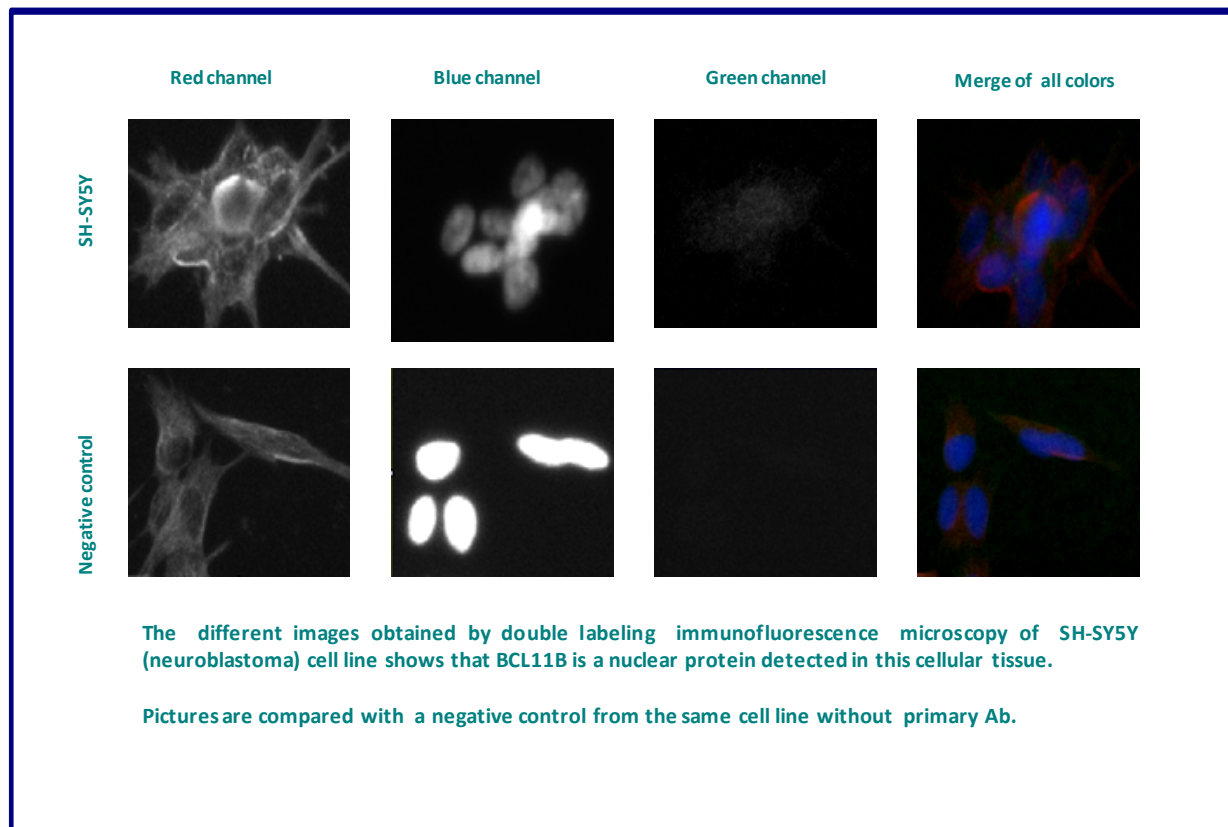
Red staining : cytoskeleton (microtubules/ α -tubuline)

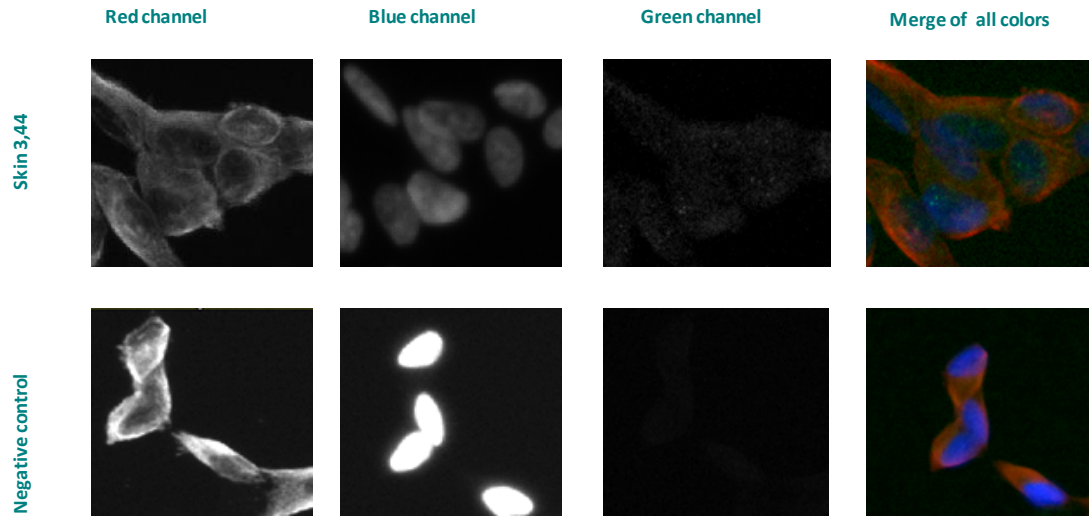
Blue staining : nucleus (Hoechst)

Green staining : anti- BCL11B antibody (purified)

Expected subcellular location : Nucleus

Expected tissue specificity : Highly expressed in brain and in malignant T-cell lines derived from patients with adult T-cell leukemia/lymphoma





The different images obtained by double labeling immunofluorescence microscopy of Skin 3,44 (melanoma) cell line shows that BCL11B is a nuclear protein detected in this cellular tissue.

Pictures are compared with a negative control from the same cell line without primary Ab.